

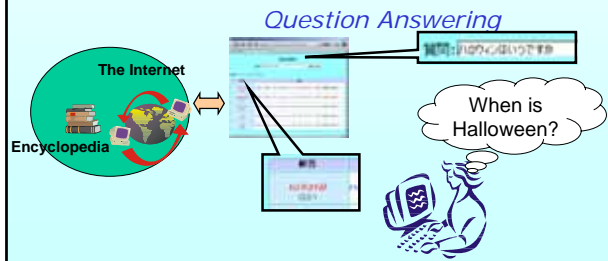
# Question Answering system for NTCIR QAC2

TAKAHASHI Tetsuro  
Computational Linguistics Laboratory  
NAIST

COE technical presentation 2004/5/27

## Background

- **Efficient Information Access** to huge amount of text data on the www or in encyclopedias.



## What is QA

- Question Answering

To obtain appropriate answers for a given question written in natural language

Q: Who killed Abraham Lincoln?  
A: John Wilkes Booth.

## NTCIR

- The NTCIR Workshop
  - A series of evaluation workshops
  - Designed to enhance research in Information Access technologies
- participants of NTCIR-4(2003-2004)
  - 74 groups
  - From 10 countries

## NTCIR

- Tasks
  - Cross-Lingual Information Retrieval Task
  - Patent Retrieval Task
  - Question Answering Challenge
  - Text Summarization Challenge
  - WEB Task

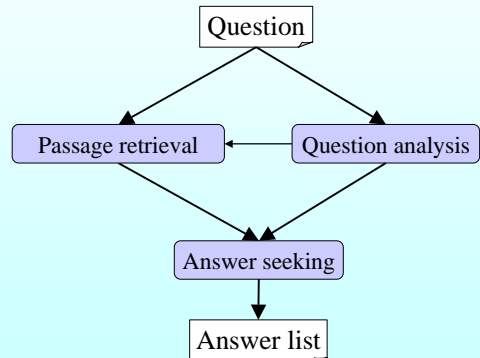
## NTCIR QAC

- Question Answering Challenge
  - The required answers are short answers consisting of a noun or noun phrase.
  - Target documents: Four years Japanese newspaper articles.
  - Subtask1
    - Returns five possible exact answers or no-answer.
  - Subtask2
    - Returns only one set of answers or no-answer.
  - Subtask3
    - Returns all the possible answers for a series of questions.

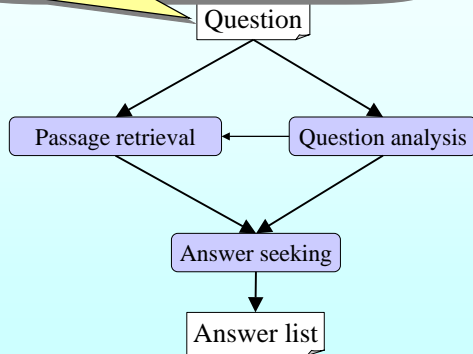
## System Overview

- Three stages
  - Question analysis
  - Passage retrieval
  - Answer selection
- Two characteristics
  - Mediates the difference of expression using paraphrasing.
  - Re-ranks answer candidates by structural matching.

## System Overview

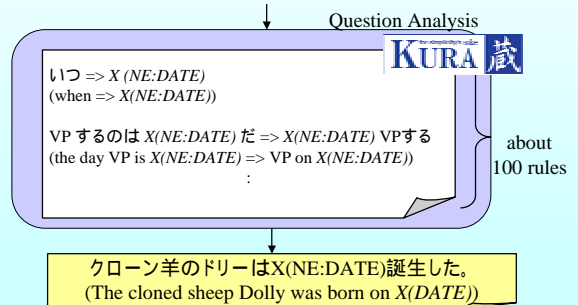


クローン羊のドリーが誕生したのはいつですか。  
(When was the cloned sheep Dolly born?)

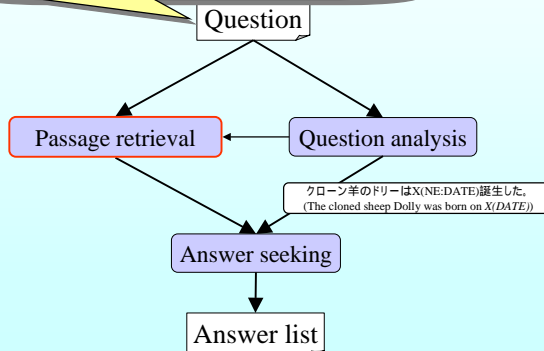


## Question analysis

クローン羊のドリーが誕生したのはいつですか。  
(When was the cloned sheep Dolly born?)

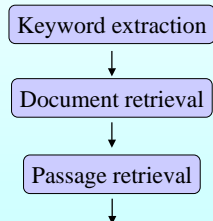


クローン羊のドリーが誕生したのはいつですか。  
(When was the cloned sheep Dolly born?)



## Passage retrieval

クローン羊のドリーが誕生したのはいつですか。  
(When was the cloned sheep Dolly born?)



## Passage retrieval

クローン羊のドリーが誕生したのはいつですか。  
(When was the cloned sheep Dolly born?)

Keyword extraction → keywords  
cloned, sheep, Dolly, born

Document retrieval

Passage retrieval

## Passage retrieval

クローン羊のドリーが誕生したのはいつですか。  
(When was the cloned sheep Dolly born?)

20-best documents

Keyword extraction → keywords  
cloned, sheep, Dolly, born

Document retrieval

Passage retrieval

Newspaper articles

## Passage retrieval

クローン羊のドリーが誕生したのはいつですか。  
(When was the cloned sheep Dolly born?)

Keyword extraction

Document retrieval

Passage retrieval

cloned, sheep, Dolly, born  
DATE

## Passage retrieval

Retrieved document

cloned, sheep, Dolly, born, DATE

- Dolly the **sheep clone** dies young .
- Dolly the **sheep**, who became famous as the first mammal to be **cloned** from an adult cell, has died.
- The news was confirmed on Friday by the Roslin Institute, the Scottish research center which created her.
- A decision was taken to "euthanase" six-year-old **Dolly** after a veterinary examination showed that she had a progressive lung disease, the institute said in a statement.
- **Dolly** became the first mammal **clone** when she was **born on 5 July 1996**.
- She was revealed to the public the following year.
- Dr Harry Griffin, from the institute, said: "**Sheep** can live to 11 or 12 years of age and lung infections are common in older **sheep**, particularly those housed inside.
- Speaking to BBC News 24 on **Friday**, Prof Wilmut said **Dolly's** birth should be the important issue.

## Passage retrieval

Retrieved document

cloned, sheep, Dolly, born, DATE

- Dolly the **sheep clone** dies young .
- Dolly the **sheep**, who became famous as the first mammal to be **cloned** from an adult cell, has died.
- The news was confirmed on Friday by the Roslin Institute, the Scottish research center which created her.
- A decision was taken to "euthanase" six-year-old **Dolly** after a veterinary examination showed that she had a progressive lung disease, the institute said in a statement.
- **Dolly** became the first mammal **clone** when she was **born on 5 July 1996**.
- She was revealed to the public the following year.
- Dr Harry Griffin, from the institute, said: "**Sheep** can live to 11 or 12 years of age and lung infections are common in older **sheep**, particularly those housed inside.
- Speaking to BBC News 24 on **Friday**, Prof Wilmut said **Dolly's** birth should be the important issue.

## Passage retrieval

クローン羊のドリーが誕生したのはいつですか。  
(When was the cloned sheep Dolly born?)

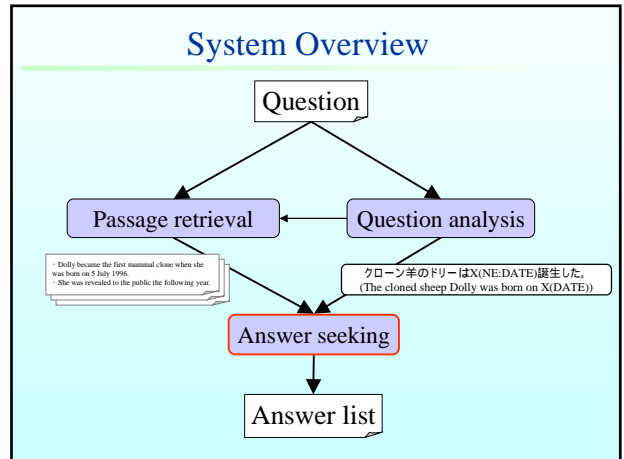
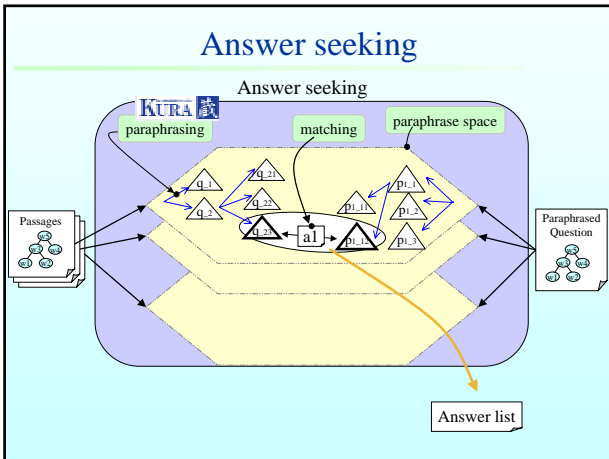
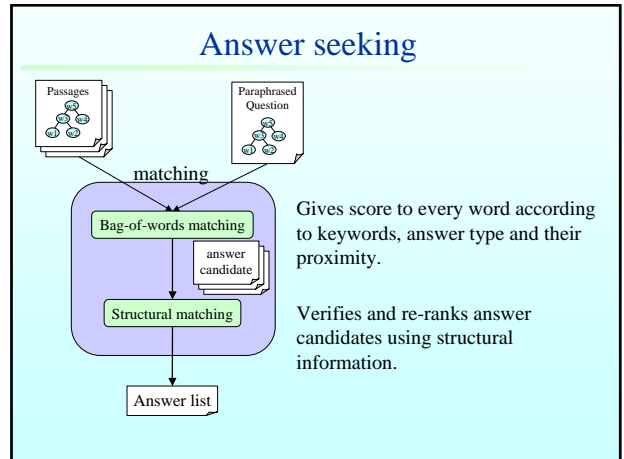
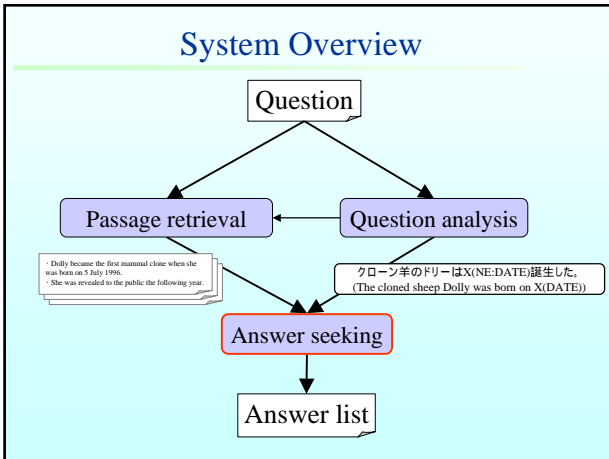
Keyword extraction

Document retrieval

Passage retrieval

Newspaper articles

10-beset passages



### Evaluation and Result

● Subtask 1 (200 questions)

MRR

	- re-ranking	+ re-ranking
- paraphrasing	0.340	0.311
+ paraphrasing	0.341	0.310

$$RR_i = \frac{1}{Rank_i}$$

$$MRR = \frac{\sum_{i=1}^n RR_i}{n}$$

- 1: 2002
- 2: 5 July 1996
- 3: Friday
- 4: 1996
- 5: 2 years ago

### Evaluation and Result

● Subtask 1 (200 questions)

MRR

	- re-ranking	+ re-ranking
- paraphrasing	0.340	0.311
+ paraphrasing	0.341	0.310

$$RR_i = \frac{1}{Rank_i}$$

$$MRR = \frac{\sum_{i=1}^n RR_i}{n}$$

- 1: 2002
- 2: 5 July 1996
- 3: Friday
- 4: 1996
- 5: 2 years ago

$RR_i = \frac{1}{2}$

## Evaluation and Result

### ● Subtask 2 (200 questions)

Mean F-value

	- re-ranking	+ re-ranking
- paraphrasing	0.219	0.185
+ paraphrasing	0.220	0.185

$$F - value_i = \frac{2 \times Recall_i \times Precision_i}{Recall_i + Precision_i}$$

$$Mean F - value = \frac{\sum_{i=1}^n F - value_i}{n}$$

## Evaluation and Result

- Re-ranking had a negative effect.
  - Other way to combine structural information.
- Effect of paraphrasing was extremely small.
  - Investigation of paraphrasing rules for question answering

## Related work

### ● Structural matching

- Ittycheriah 2001, Kiyota 2002
  - used information of syntactic structure as a score to be appended



as a penalty

- The penalty was too strict, since question key words appeared in positions isolated from the answer in many passages.

## Conclusion

- Question answering system
  - Mediates the difference of expression using paraphrasing.
  - Re-ranks answer candidates by structural matching.
- Evaluation
  - Re-ranking had a negative effect.
  - Effect of paraphrasing was extremely small.
- Future work
  - Investigation of paraphrasing rules for question answering.